

ARCTIKO LTF 85

true cooling specialists



LOW TEMPERATURE CHEST FREEZER I

STORES YOUR SAMPLES UNDER OPTIMAL CONDITIONS

The single compressor technology provides reliable low temperature freezing and high temperature uniformity.

► COOLING SYSTEM

Arctiko's LTF range utilizes our single compressor technology. This means fewer mechanical components taking up space and lowering unnecessary heat and noise dissipation.

The technology ensures the best possible storage capacity per square meter of any chest freezer models in the market.

With Arctiko, you are maximizing the amount of samples you can store, while retaining the best possible cooling performance.

► OPTIMIZED STORAGE CAPACITY

The freezer has optimized internal storage for the best overview. With the standard included stackable basket and the optional stainless steel front rack storage system the samples will be easy accessible at any time.

The freezer also has a premade access port with no extra cost involved, making it easier to monitor or inspect the unit with external probes.

► FILTERLESS CONSTRUCTION

Our filterless construction makes cleaning unnecessary. The evaporator coils are spaced so far apart that dust will not be trapped and obstruct the airflow.

The filterless construction eliminates the need for filters entirely, saving you maintenance time and cost.



LTF 85*



SINGLE COMPRESSOR SYSTEM



FILTERLESS CONSTRUCTION



NOISE REDUCTION TECHNOLOGY



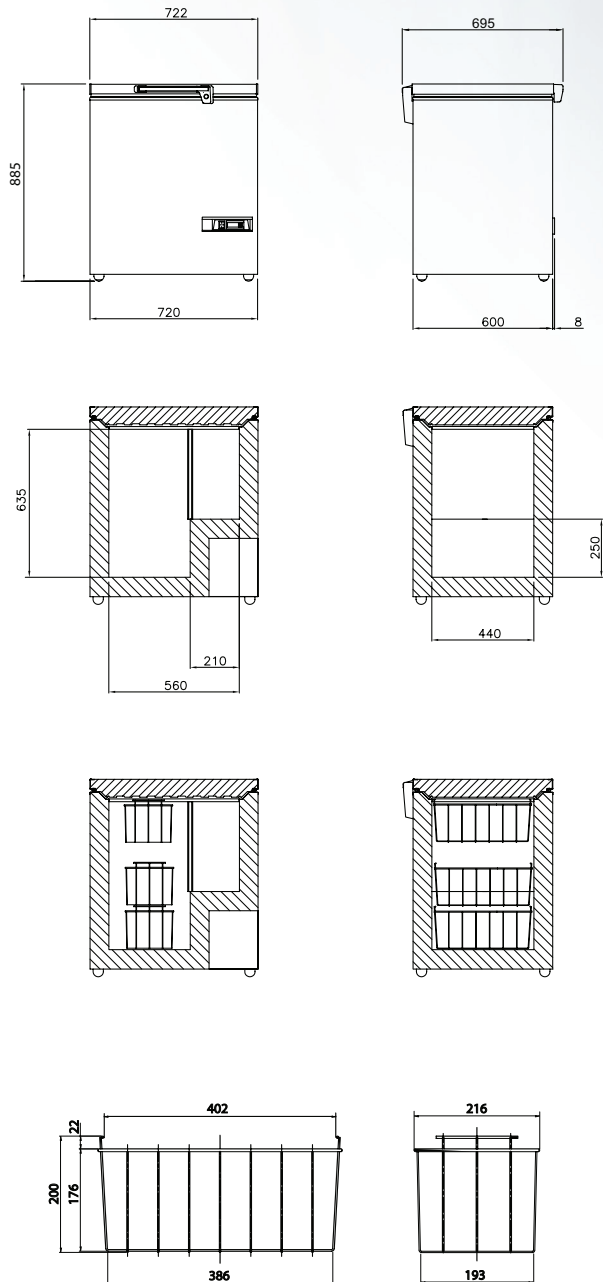
Optimal storage capacity and overview of the stored samples with the baskets.



The key lock on the handle is a standard feature in our LTF 85 for optimal security for your samples.

The ARCTIKO LTF 85 model supports following optional features:

- Temperature chart recorder
- Rollers on metal frame
- GSM alarm module
- Voltage converter
- Voltage stabilizer
- Racks & boxes
- Jumbo basket
- Basket



MODEL		LTF 85
Main specifications	Item code	DAI 0101
	Temperature range (°C)	-30 / -60
	Max. ambient temperature (°C)	25
	Capacity (L)	71
	Exterior dimensions WxDxH (mm)	552x648x850
	Interior dimensions WxDxH (mm)	390x390x465
	Weight (kg)	48
	Insulation (mm)	80
	Cooling technology	static
	Controller model / probe type	Dxcell / PT1000
Power	Power supply (V)	230
	Frequency (Hz)	50
	Power consumption (kWh/24h)	5.1
	AMP (A)	2.0
	Power (Watt)	297
	Horse power (HP)	1/2
Alarm functions	Alarm display as text - not codes	no
	Visual / acoustic alarm	yes / yes
	Power failure alarm	no
	Adjustable high / low temperature alarm	yes / yes
	Open door alarm	no
	Probe failure alarm	yes
	Low battery alarm	no
	Compressor failure alarm	no
Battery backup for alarms (approx. hrs.)	no	
Data logging & external connection	Voltage free contact for remote alarm (e.g. GSM alarm module)	yes
	Electronic data logger	no
	RS 485 port	no
	USB port for software update & data download	no
Display features	Temperature chart recorder	optional
	Display type	LED display
	Number of optional reference probes	no
	Password protection for turning unit on / off	no
Other features	Temperature graph on display	no
	Automatic defrost	no
	Antifreeze function	no
	Vacuum release port	no
	Access port for external probe etc. (int. diameter mm)	12
	Light	no
	Lock with key	yes
	Castors (total pcs) / castors with brake (pcs)	opt. rollers on metal frame / no
	Fixed feet (pcs) / levelling feet (pcs)	4 / 0
	Sub lids / inner doors (pcs)	no
	Baskets (pcs)	1
	Max. no. of baskets (pcs)	2
Max. load per basket (kg)	11	
Total capacity of 50 mm boxes 9x9 dividers (pcs)	40	
Total capacity of 75 mm boxes 9x9 dividers (pcs)	25	
Total capacity of 96 mm boxes 9x9 dividers (pcs)	20	
Refrigeration & cabinet	Number of compressors	1
	Refrigerant	Nature R
	Interior cabinet material	painted steel
	Exterior cabinet material	painted steel
	Colour (exterior cabinet)	white
	Foam type	polyurethane
Shipping	VIP vacuum insulated panels	no
	Shipping weight (kg)	76
	Shipping dimensions WxDxH (cm)	68x64x116
Shipping volume (m ³)	0,51	

