

-40°/-86°

**ULTRA LOW TEMPERATURE | HIGHLY RELIABLE ULT FREEZER**  
WITH NATURAL REFRIGERANT AND LOW POWER CONSUMPTION

The freezer comes with the extremely powerful independent **TRUE DUAL™** technology that keeps the samples protected at -70°C if an unexpected failure occurred keeping you worry-free and the samples secured and safely guarded.

GG20

NATURAL  
REFRIGERANT

### ► RELIABLE FREEZING

This model features a swift pull-down time of about 3 hours<sup>1</sup>, showcasing a strong cooling system with robust insulation from a mix of polyurethane and vacuum-insulated panels.

Even with frequent door openings, it quickly reestablishes a uniform temperature, maintaining a reliable environment unaffected by external temperatures, thanks to its excellent temperature recovery capabilities.

<sup>1</sup>See below graph under "Improved recovery time".  
Ambient temperature 32°C Freezer with no-load.

### ► ENVIRONMENTALLY FRIENDLY

Our units are completely free of HFCs, HCFCs, CFCs, and PFCs. Additionally, the ODP value is zero, ensuring effective sample protection while fully safeguarding the environment.

These eco-friendly refrigerants also reduce energy consumption, enhancing the cooling system's cost-effectiveness and maintaining high performance through strong thermodynamic properties.

### ► ULTIMATE SAMPLE PROTECTION

This model incorporates advanced technologies and the very best components for exceptional performance.

Our **TRUE DUAL™** technology prevents sample loss by keeping the freezer operational in the unlikely event of one compressor failing, maintaining -70°C. This ensures your research or samples are protected around the clock, avoiding the risks associated with inferior laboratory equipment.

### ► MULTI-VOLTAGE

Our multi-voltage freezers operate between 100 to 240 volts, seamlessly integrating into global settings without additional adapters or transformers.

This adaptability also ensures resilience against power fluctuations, providing safe and stable storage for sensitive materials.

### ► EFFICIENT TECHNOLOGY

This device is supplied with inverter technology, enabling variable compressor speed, lower energy consumption and lower noise levels with the additional effects of being very robust against fluctuations on the power grid and differences in supply voltage, no need for voltage stabilizers and/or voltage regulators.



TRUE DUAL™  
TECHNOLOGY



DIRECT  
COOLING



VACUUM  
INSULATED  
PANELS



The first-class V700 controller is equipped with all necessary alarms and features on top of everything, we developed ECO mode to reduce energy consumption while maintaining optimum uniformity for the stored materials.



We designed the model with easily accessible compartments including four removable inner doors that are individually insulated with magnetic catches. This smart function also guarantees easy defrosting and effortless maintenance of the unit.

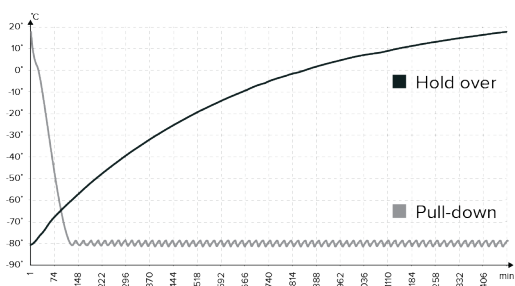
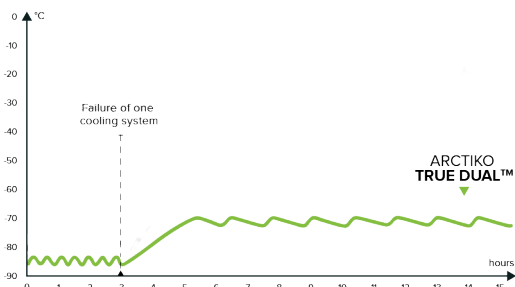


Our new vacuum valve solution features an automatic pressure equalization port. With fast, reliable pressure equalization, your valuable samples remain protected, while allowing for effortless opening and operation whenever needed.



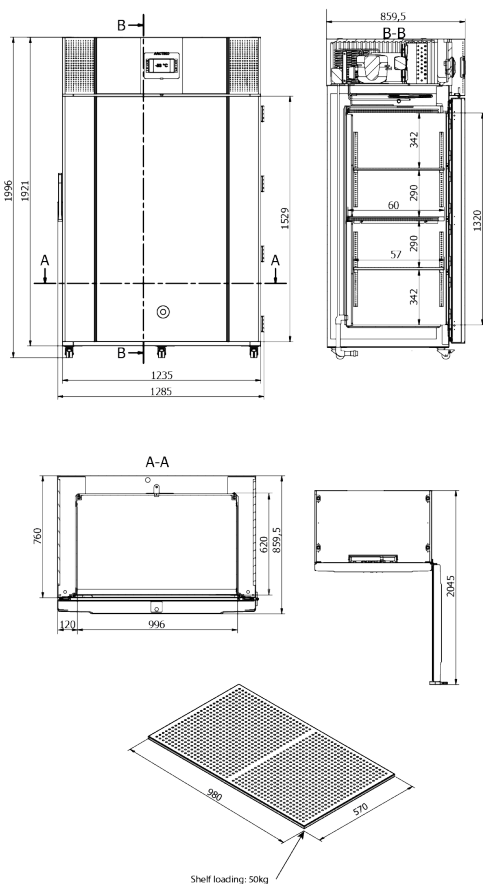
The modernized shelves in the new Integraline are perforated and easily adjustable, offering the best flexibility for your storage needs. Extra durable shelves with up to 50 kg.

ULUF P830 MV



## IMPROVED RECOVERY TIMES

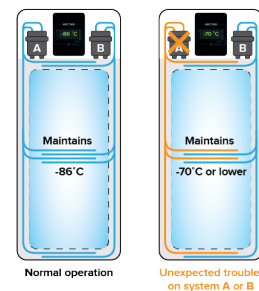
Pull-down times measures the time taken to reach the correct temperature, the faster the better. Hold over indication the freezers ability to keep the samples safe.



Shelf loading: 50kg

## ARCTIKO TRUE DUAL™ System

ARCTIKO's true dual cooling system provides a reliable backup, maintaining consistently low internal temperatures. This advanced system ensures additional safety, high performance, and fast temperature recovery, with the capability of maintaining a stable -70°C, offering unmatched protection for your valuable samples.



MODEL	ULUF P830 MV																												
Main specifications	<tr> <td>Item code</td><td>1000050</td></tr> <tr> <td>Temperature range (°C)</td><td>-40 / -86</td></tr> <tr> <td>Max. ambient temperature (°C)</td><td>32</td></tr> <tr> <td>Capacity (L)</td><td>815</td></tr> <tr> <td>Exterior dimensions WxDxH (mm)</td><td>1285x859,5x1999</td></tr> <tr> <td>Interior dimensions WxDxH (mm)</td><td>996x620x1320</td></tr> <tr> <td>Weight (KG)</td><td>307</td></tr> <tr> <td>Insulation (mm)</td><td>120</td></tr> <tr> <td>Cooling technology</td><td>Dual system / static</td></tr> <tr> <td>Controller model / probe type</td><td>V700 / PT100</td></tr>	Item code	1000050	Temperature range (°C)	-40 / -86	Max. ambient temperature (°C)	32	Capacity (L)	815	Exterior dimensions WxDxH (mm)	1285x859,5x1999	Interior dimensions WxDxH (mm)	996x620x1320	Weight (KG)	307	Insulation (mm)	120	Cooling technology	Dual system / static	Controller model / probe type	V700 / PT100								
Item code	1000050																												
Temperature range (°C)	-40 / -86																												
Max. ambient temperature (°C)	32																												
Capacity (L)	815																												
Exterior dimensions WxDxH (mm)	1285x859,5x1999																												
Interior dimensions WxDxH (mm)	996x620x1320																												
Weight (KG)	307																												
Insulation (mm)	120																												
Cooling technology	Dual system / static																												
Controller model / probe type	V700 / PT100																												
Power	<tr> <td>Power supply (V)</td><td>100 to 240</td></tr> <tr> <td>Frequency (Hz)</td><td>50/60</td></tr> <tr> <td>Power consumption (kWh/24h)</td><td>8,9</td></tr>	Power supply (V)	100 to 240	Frequency (Hz)	50/60	Power consumption (kWh/24h)	8,9																						
Power supply (V)	100 to 240																												
Frequency (Hz)	50/60																												
Power consumption (kWh/24h)	8,9																												
Alarm functions	<tr> <td>Alarm (displayed as text, not codes)</td><td>Yes</td></tr> <tr> <td>Visual / acoustic alarm</td><td>Yes / Yes</td></tr> <tr> <td>Power failure alarm</td><td>Yes</td></tr> <tr> <td>Adjustable high / low-temperature alarm</td><td>Yes / Yes</td></tr> <tr> <td>Open door alarm</td><td>Yes</td></tr> <tr> <td>Probe failure alarm</td><td>Yes</td></tr> <tr> <td>Low battery alarm</td><td>Yes</td></tr> <tr> <td>Compressor failure alarm</td><td>Yes</td></tr> <tr> <td>Battery backup for alarms (approx. hrs.)</td><td>72</td></tr>	Alarm (displayed as text, not codes)	Yes	Visual / acoustic alarm	Yes / Yes	Power failure alarm	Yes	Adjustable high / low-temperature alarm	Yes / Yes	Open door alarm	Yes	Probe failure alarm	Yes	Low battery alarm	Yes	Compressor failure alarm	Yes	Battery backup for alarms (approx. hrs.)	72										
Alarm (displayed as text, not codes)	Yes																												
Visual / acoustic alarm	Yes / Yes																												
Power failure alarm	Yes																												
Adjustable high / low-temperature alarm	Yes / Yes																												
Open door alarm	Yes																												
Probe failure alarm	Yes																												
Low battery alarm	Yes																												
Compressor failure alarm	Yes																												
Battery backup for alarms (approx. hrs.)	72																												
Data logging & external connection	<tr> <td>Voltage-free contact for remote alarm (e.g. GSM alarm module)</td><td>Yes</td></tr> <tr> <td>Electronic data logger</td><td>Yes</td></tr> <tr> <td>RS 485 port</td><td>Optional</td></tr> <tr> <td>USB port for software update &amp; data download</td><td>Yes</td></tr> <tr> <td>Temperature chart recorder</td><td>Optional</td></tr>	Voltage-free contact for remote alarm (e.g. GSM alarm module)	Yes	Electronic data logger	Yes	RS 485 port	Optional	USB port for software update & data download	Yes	Temperature chart recorder	Optional																		
Voltage-free contact for remote alarm (e.g. GSM alarm module)	Yes																												
Electronic data logger	Yes																												
RS 485 port	Optional																												
USB port for software update & data download	Yes																												
Temperature chart recorder	Optional																												
Display features	<tr> <td>Display type</td><td>7" touch screen</td></tr> <tr> <td>Number of optional reference probes</td><td>0 (1 reference probe included as standard)</td></tr> <tr> <td>Password protection for turning unit on / off</td><td>Yes</td></tr> <tr> <td>Temperature graph on display</td><td>Yes</td></tr>	Display type	7" touch screen	Number of optional reference probes	0 (1 reference probe included as standard)	Password protection for turning unit on / off	Yes	Temperature graph on display	Yes																				
Display type	7" touch screen																												
Number of optional reference probes	0 (1 reference probe included as standard)																												
Password protection for turning unit on / off	Yes																												
Temperature graph on display	Yes																												
Other features	<tr> <td>Vacuum release port</td><td>Yes</td></tr> <tr> <td>Antifreeze function</td><td>Yes</td></tr> <tr> <td>Access port for external probe etc. (int. diameter mm)</td><td>12</td></tr> <tr> <td>Light</td><td>Yes</td></tr> <tr> <td>Lock with key</td><td>Yes</td></tr> <tr> <td>Castors (total pcs) / castors with brake (pcs)</td><td>5 / 2</td></tr> <tr> <td>Sub lids / inner doors (pcs)</td><td>4</td></tr> <tr> <td>Fixed shelves (pcs) / adjustable shelves (pcs)</td><td>1 / 2</td></tr> <tr> <td>Max. no. of shelves (pcs) / recommended max. no. of shelves (pcs)</td><td>5 / 5</td></tr> <tr> <td>Max. load per shelf (kg)</td><td>50</td></tr> <tr> <td>Total capacity of 50 mm boxes 9x9 dividers (pcs)</td><td>616</td></tr> <tr> <td>Total capacity of 75 mm boxes 9x9 dividers (pcs)</td><td>392</td></tr> <tr> <td>Total capacity of 96 mm boxes 9x9 dividers (pcs)</td><td>280</td></tr> <tr> <td>Max. capacity of samples in Arctiko 10x10 boxes (pcs)</td><td>61.600</td></tr>	Vacuum release port	Yes	Antifreeze function	Yes	Access port for external probe etc. (int. diameter mm)	12	Light	Yes	Lock with key	Yes	Castors (total pcs) / castors with brake (pcs)	5 / 2	Sub lids / inner doors (pcs)	4	Fixed shelves (pcs) / adjustable shelves (pcs)	1 / 2	Max. no. of shelves (pcs) / recommended max. no. of shelves (pcs)	5 / 5	Max. load per shelf (kg)	50	Total capacity of 50 mm boxes 9x9 dividers (pcs)	616	Total capacity of 75 mm boxes 9x9 dividers (pcs)	392	Total capacity of 96 mm boxes 9x9 dividers (pcs)	280	Max. capacity of samples in Arctiko 10x10 boxes (pcs)	61.600
Vacuum release port	Yes																												
Antifreeze function	Yes																												
Access port for external probe etc. (int. diameter mm)	12																												
Light	Yes																												
Lock with key	Yes																												
Castors (total pcs) / castors with brake (pcs)	5 / 2																												
Sub lids / inner doors (pcs)	4																												
Fixed shelves (pcs) / adjustable shelves (pcs)	1 / 2																												
Max. no. of shelves (pcs) / recommended max. no. of shelves (pcs)	5 / 5																												
Max. load per shelf (kg)	50																												
Total capacity of 50 mm boxes 9x9 dividers (pcs)	616																												
Total capacity of 75 mm boxes 9x9 dividers (pcs)	392																												
Total capacity of 96 mm boxes 9x9 dividers (pcs)	280																												
Max. capacity of samples in Arctiko 10x10 boxes (pcs)	61.600																												
Refrigeration & cabinet	<tr> <td>Number of compressors</td><td>2</td></tr> <tr> <td>Refrigerant</td><td>GG20</td></tr> <tr> <td>Interior cabinet material</td><td>Stainless steel</td></tr> <tr> <td>Exterior cabinet material</td><td>Painted steel</td></tr> <tr> <td>Colour (exterior cabinet)</td><td>White</td></tr> <tr> <td>Foam type</td><td>Polyurethane</td></tr> <tr> <td>VIP vacuum insulated panels</td><td>Yes</td></tr>	Number of compressors	2	Refrigerant	GG20	Interior cabinet material	Stainless steel	Exterior cabinet material	Painted steel	Colour (exterior cabinet)	White	Foam type	Polyurethane	VIP vacuum insulated panels	Yes														
Number of compressors	2																												
Refrigerant	GG20																												
Interior cabinet material	Stainless steel																												
Exterior cabinet material	Painted steel																												
Colour (exterior cabinet)	White																												
Foam type	Polyurethane																												
VIP vacuum insulated panels	Yes																												
Shipping	<tr> <td>Shipping weight (kg)</td><td>459</td></tr> <tr> <td>Shipping dimensions WxDxH (cm)</td><td>141x127x225</td></tr> <tr> <td>Shipping volume (m³)</td><td>4,03</td></tr>	Shipping weight (kg)	459	Shipping dimensions WxDxH (cm)	141x127x225	Shipping volume (m³)	4,03																						
Shipping weight (kg)	459																												
Shipping dimensions WxDxH (cm)	141x127x225																												
Shipping volume (m³)	4,03																												