

-40°/-86°

**ULTRA LOW TEMPERATURE | HIGHLY RELIABLE ULT FREEZER**  
WITH NATURAL REFRIGERANT AND LOW POWER CONSUMPTION

The freezer comes with the extremely powerful independent **TRUE DUAL™** technology that keeps the samples protected at -70°C if an unexpected failure occurred keeping you worry-free and the samples secured and safely guarded.

GG20

NATURAL  
REFRIGERANT

### ► RELIABLE FREEZING

This model features a swift pull-down time of about 3 hours<sup>1</sup>, showcasing a strong cooling system with robust insulation from a mix of polyurethane and vacuum-insulated panels.

Even with frequent door openings, it quickly reestablishes a uniform temperature, maintaining a reliable environment unaffected by external temperatures, thanks to its excellent temperature recovery capabilities.

<sup>1</sup>See below graph under "Improved recovery time".  
Ambient temperature 32°C Freezer with no-load.

### ► ENVIRONMENTALLY FRIENDLY

Our units are completely free of HFCs, HCFCs, CFCs, and PFCs. Additionally, the ODP value is zero, ensuring effective sample protection while fully safeguarding the environment.

These eco-friendly refrigerants also reduce energy consumption, enhancing the cooling system's cost-effectiveness and maintaining high performance through strong thermodynamic properties.

### ► ULTIMATE SAMPLE PROTECTION

This model incorporates advanced technologies and the very best components for exceptional performance.

Our **TRUE DUAL™** technology prevents sample loss by keeping the freezer operational in the unlikely event of one compressor failing, maintaining -70°C. This ensures your research or samples are protected around the clock, avoiding the risks associated with inferior laboratory equipment.

### ► MULTI-VOLTAGE

Our multi-voltage freezers operate between 100 to 240 volts, seamlessly integrating into global settings without additional adapters or transformers.

This adaptability also ensures resilience against power fluctuations, providing safe and stable storage for sensitive materials.

### ► EFFICIENT TECHNOLOGY

This device is supplied with inverter technology, enabling variable compressor speed, lower energy consumption and lower noise levels with the additional effects of being very robust against fluctuations on the power grid and differences in supply voltage, no need for voltage stabilizers and/or voltage regulators.



TRUE DUAL™  
TECHNOLOGY



DIRECT  
COOLING



VACUUM  
INSULATED  
PANELS



The first-class V700 controller is equipped with all necessary alarms and features on top of everything, we developed ECO mode to reduce energy consumption while maintaining optimum uniformity for the stored materials.



We designed the model with easily accessible compartments including four removable inner doors that are individually insulated with magnetic catches. This smart function also guarantees easy defrosting and effortless maintenance of the unit.



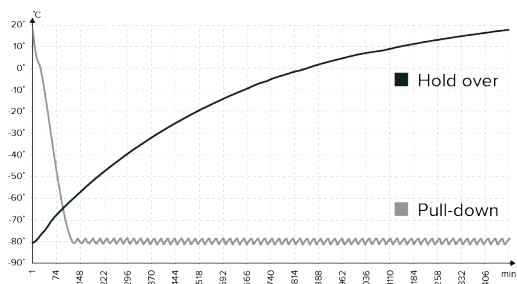
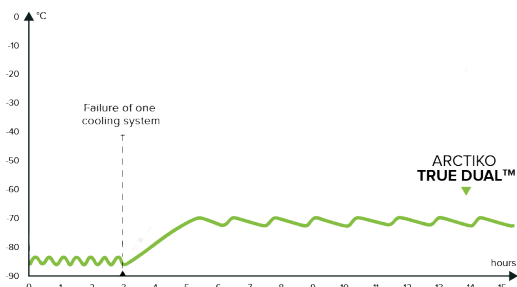
Our new vacuum valve solution features an automatic pressure equalization port. With fast, reliable pressure equalization, your valuable samples remain protected, while allowing for effortless opening and operation whenever needed.



The modernized shelves in the new Integraline are perforated and easily adjustable, offering the best flexibility for your storage needs. Extra durable shelves with up to 50 kg.

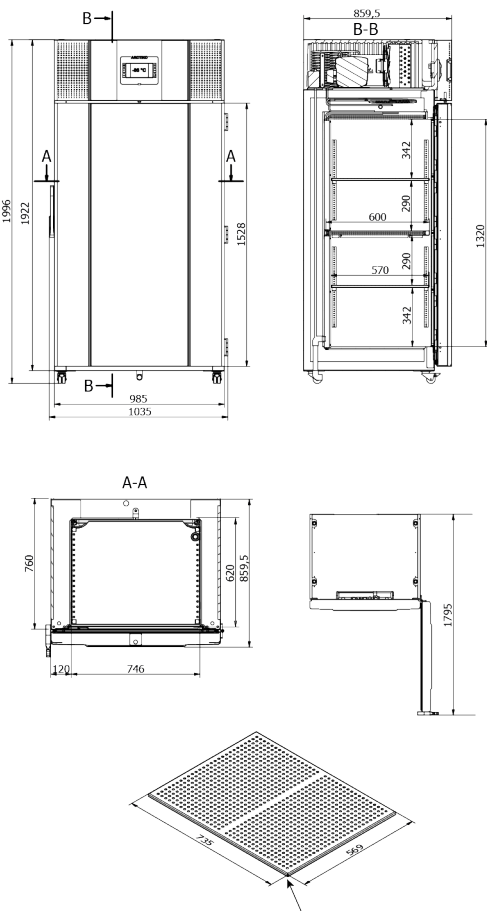


ULUF P620 MV



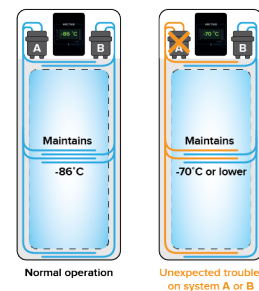
## IMPROVED RECOVERY TIMES

Pull-down times measures how quickly a freezer can reach the correct temperature, the faster the better. Hold over indicates the time the freezer can maintain a safe internal temperature.



## ARCTIKO TRUE DUAL™ System

ARCTIKO's true dual cooling system provides a reliable backup, maintaining consistently low internal temperatures. This advanced system ensures additional safety, high performance, and fast temperature recovery, with the capability of maintaining a stable -70°C, offering unmatched protection for your valuable samples.



MODEL	ULUF P620 MV
Main specifications	Item code
	1000049
	Temperature range (°C)
	-40 / -86
	Max. ambient temperature (°C)
	32
	Capacity (L)
	614
	Exterior dimensions WxDxH (mm)
	1035x859,5x1999
Power	Interior dimensions WxDxH (mm)
	746x620x1320
	Weight (KG)
	247
	Insulation (mm)
	120
	Cooling technology
	dual system / static
	Controller model / probe type
	V700 / PT100
Alarm functions	Power supply (V)
	100 to 240
	Frequency (Hz)
	50/60
	Power consumption (kWh/24h)
	8,4
	AMP (A)
	-
	Power (Watt)
	-
Data logging & external connection	Horsepower (HP)
	-
	Alarm (displayed as text, not codes)
	yes
	Visual / acoustic alarm
	yes / yes
	Power failure alarm
	yes
	Adjustable high / low-temperature alarm
	yes / yes
Display features	Open door alarm
	yes
	Probe failure alarm
	yes
	Low battery alarm
	yes
	Compressor failure alarm
	yes
	Battery backup for alarms (approx. hrs.)
	72
Other features	Voltage-free contact for remote alarm (e.g. GSM alarm module)
	yes
	Electronic data logger
	yes
	RS 485 port
	optional
	USB port for software update & data download
	yes
	Temperature chart recorder
	optional
Refrigeration & cabinet	Display type
	7" touch screen
	Number of optional reference probes
	0 (1 reference probe included as standard)
	Password protection for turning unit on / off
	yes
	Temperature graph on display
	yes
	Vacuum release port
	yes
Shipping	Antifreeze function
	yes
	Access port for external probe etc. (int. diameter mm)
	12
	Light
	yes
	Lock with key
	Yes
	Castors (total pcs) / castors with brake (pcs)
	4 / 2
	Sub lids / inner doors (pcs)
	4
	Fixed shelves (pcs) / adjustable shelves (pcs)
	1 / 2
	Max. no. of shelves (pcs) / recommended max. no. of shelves (pcs)
	5 / 5
	Max. load per shelf (kg)
	50
	Total capacity of 50 mm boxes 9x9 dividers (pcs)
	440
	Total capacity of 75 mm boxes 9x9 dividers (pcs)
	280
	Total capacity of 96 mm boxes 9x9 dividers (pcs)
	200
	Max. capacity of samples in Arctiko 10x10 boxes (pcs)
	44.200
	Number of compressors
	2
	Refrigerant
	GG20
	Interior cabinet material
	stainless steel
	Exterior cabinet material
	painted steel
	Colour (exterior cabinet)
	white
	Foam type
	polyurethane
	VIP vacuum insulated panels
	Yes
	Shipping weight (kg)
	387
	Shipping dimensions WxDxH (cm)
	115x127x225
	Shipping volume (m³)
	3,29



IEC 61010 / EN IEC 61010 / CSA C22.2 no 61010