

ARCTIKO LF 1350

true cooling specialists



BIOMEDICAL FREEZER

With its low energy consumption, Arctiko's eco-friendly LF series offers flexibility, security, and reliability for users. The Carel controller features an integrated data logger, which can be accessed via Bluetooth.

► INTEGRATED DATA LOGGER

Combining accurate temperature monitoring for optimal sample storage and regulatory compliance, the integrated data logger empowers you with on-the-go control via detailed graphs, alarms, and settings accessible through your phone's Bluetooth connection to the unit's display.

► FORCED AIR COOLING

Forced air cooling provides excellent temperature stability. Forcing the airflow around the stored items ensures quick temperature recovery after door openings.

► KEY LOCK SECURITY

Equipped with a secure key lock, providing an added layer of protection for valuable contents and preventing unauthorized access. This feature ensures the integrity and confidentiality of stored items, making it ideal for environments where security is paramount.

► ENVIRONMENTALLY FRIENDLY REFRIGERANT

This device uses refrigerants with low Ozone Depletion Potential (ODP) and Global Warming Potential (GWP), supporting environmentally conscious operation while maintaining optimal performance and safety standards.



LF 1350



DATA LOGGER



AIR FORCED COOLING



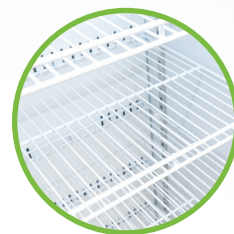
ADJUSTABLE SHELVES



VARIOUS SAFETY FEATURES



The Carel controller features Bluetooth connection, visual and acoustic alarms, high/low-temperature alarms, open-door alarms and a data logger.



Easily adjustable shelves in order to offer best flexibility for your storage needs.



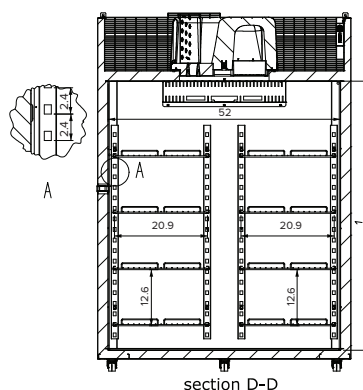
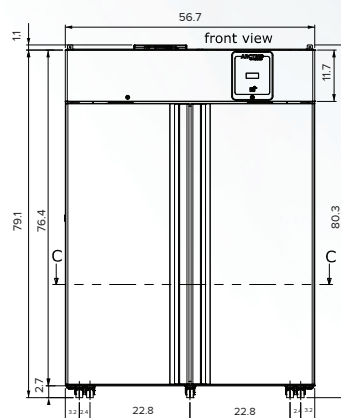
All models feature durable, cost saving LED lighting for better overview of your samples.

ARCTIKO LF 1350

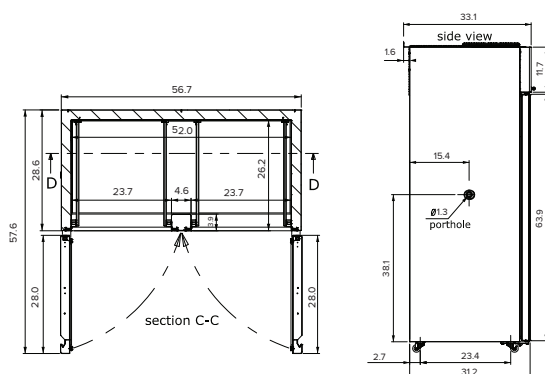
true cooling specialists

The ARCTIKO PR, LR and LF series includes the following features, and more:

- Forced Air Cooling
- Low Energy Consumption
- Key Lock on Door
- Carel controller
- Remote Alarm Interface
- Monoblock Technology
- Eco Friendly Refrigerant



section D-D



section C-C

MODEL		LF 1350
Main specifications	Item code	1400031
	Temperature range (°C)	-25°C to -10°C
	Ambient temperature (°C)	40°C
	Capacity (L)	1348
	Capacity (cu.FT)	48
	Exterior dimensions WxDxH (mm)	1448x788x2007
	Interior dimensions WxDxH (mm)	1321x661x1524
	Weight (kg)	220
	Insulation (mm)	60
	Cooling technology	Air Forced
Power	Controller model / probe type	Carel iJS / NTC
	Power supply (V)	115
	Frequency (Hz)	60
	Power consumption (kWh/24h)	3.81
	AMP (A)	3.2
	Power (Watt)	290
Alarm functions	Horsepower (HP)	1/5
	Alarm (displayed as text, not codes)	Yes
	Visual / acoustic alarm	Yes / Yes
	Power failure alarm	Yes
	Adjustable high / low-temperature alarm	Yes / Yes
	Open door alarm	Yes
	Probe failure alarm	Yes
Data logging & external connection	Low battery alarm	Yes
	Voltage-free contact for remote alarm (e.g. GSM alarm module)	Yes
	Electronic data logger	Yes
	Bluetooth data download	Yes
Display features	Temperature chart recorder	Optional
	Lockable display to prevent accidental shutdowns	Yes
	Temperature Graph Available via app	Bluetooth
Other features	Number of optional reference probes	2
	Automatic defrost	Yes
	Vacuum release port	Yes
	Access port for external probe etc.	Yes
	Light	Yes
	Lock with key	Yes
	Castors (total pcs) / castors with brake (pcs)	6 / 2
	Reversible door(s)	Yes
	Fixed shelves (pcs) / adjustable shelves (pcs)	6
	Max. no. of shelves (pcs) / recommended max. no. of shelves (pcs)	12
	Max load per shelf (lb)	99
	Adjustable drawers (pcs)	Optional
	Max. no. of adjustable drawers (pcs)	12
	Max. load per adjustable drawer (lb)	99
Refrigeration & cabinet	Number of compressors	1
	Refrigerant	R290
	Interior cabinet material	PVC film coated and Anticorrosion treated hot-dip Galvanized steel
	Exterior cabinet material	PVC film coated and Anticorrosion treated hot-dip Galvanized steel
	Colour (exterior cabinet)	White
	Foam type	Cyclopentane polyurethane
	Shipping weight (kg)	241
	Shipping dimensions WxDxH (mm)	1524x915x2210
	Shipping volume (m³)	3.10